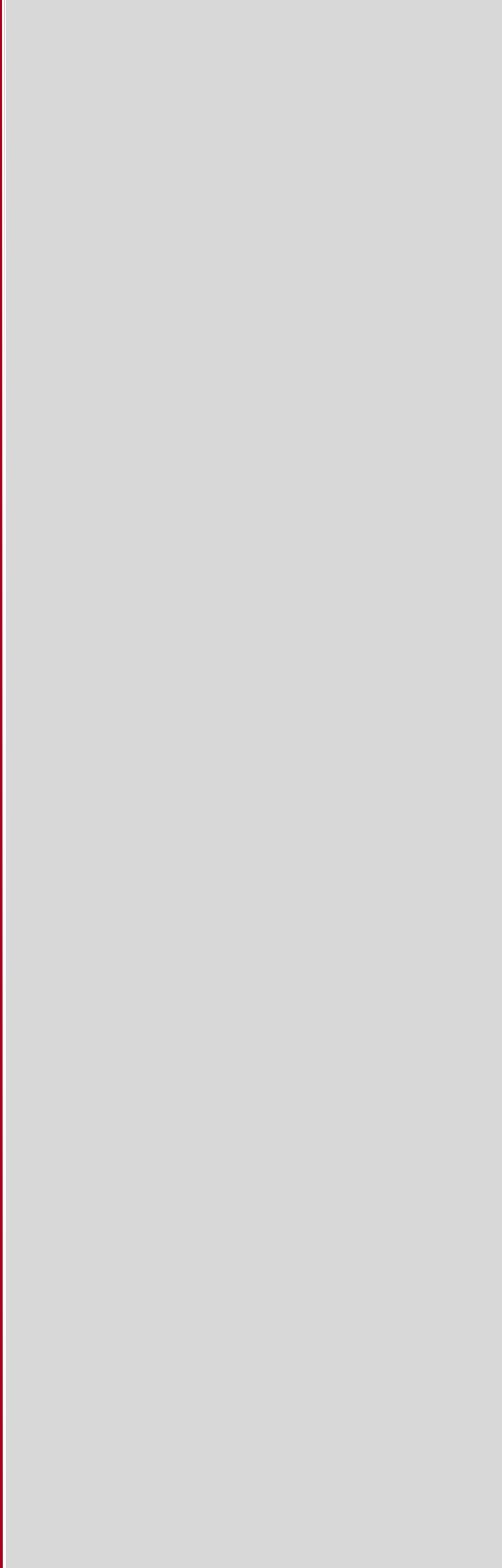
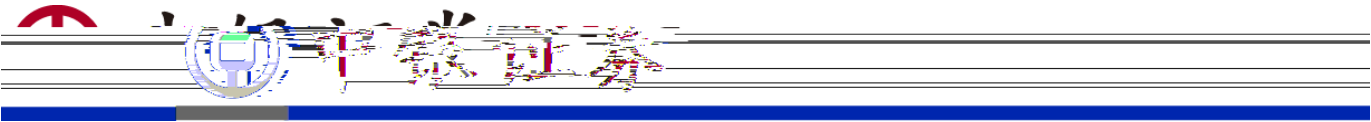


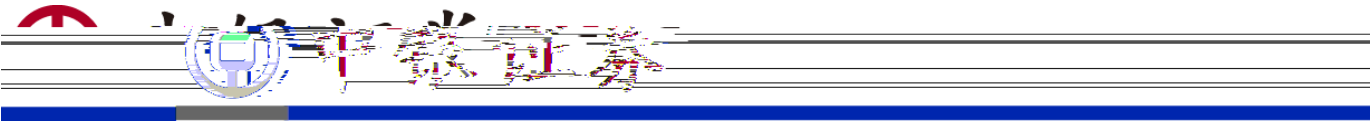


中銀證券





:	.....	<b>7</b>
	.....	7
	.....	8
	.....	9
	.....	11
	.....	13
	.....	<b>14</b>
	.....	14
	.....	16
	.....	<b>18</b>
	.....	19
	.....	22
	.....	24
	.....	<b>28</b>
	.....	28
	.....	30
	.....	32
	.....	<b>35</b>
	.....	35
	.....	36
	.....	38
	.....	<b>40</b>
	.....	40
CBD	.....	42
	.....	45
CCUS	.....	46

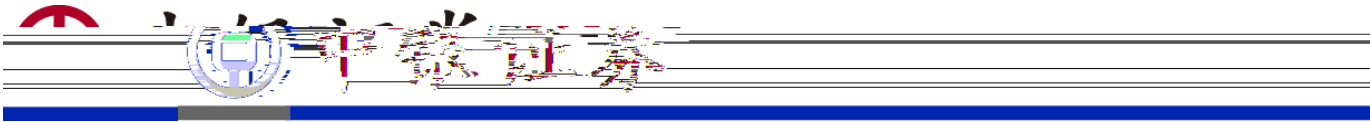


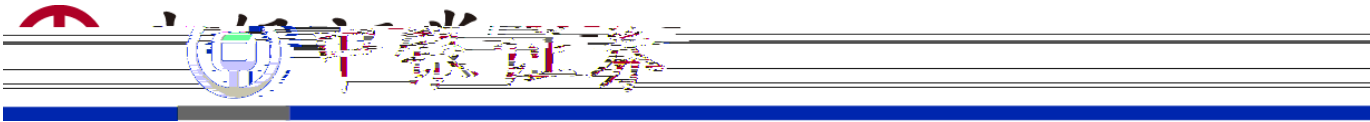
..... **49**

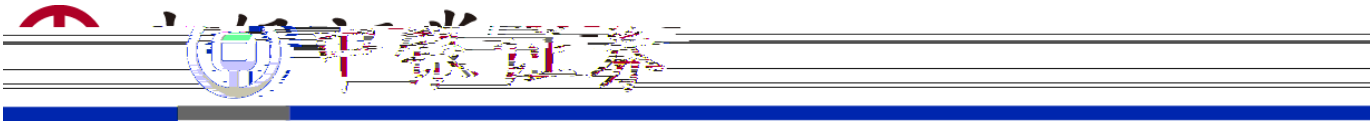
.....49

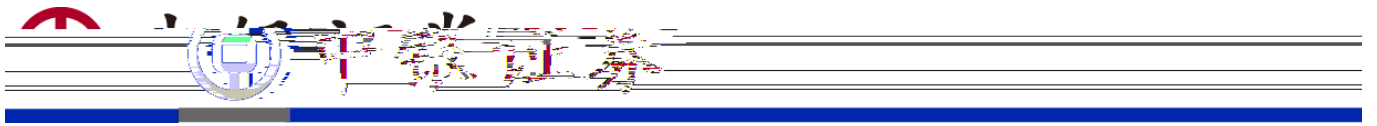
.....49

..... **51**

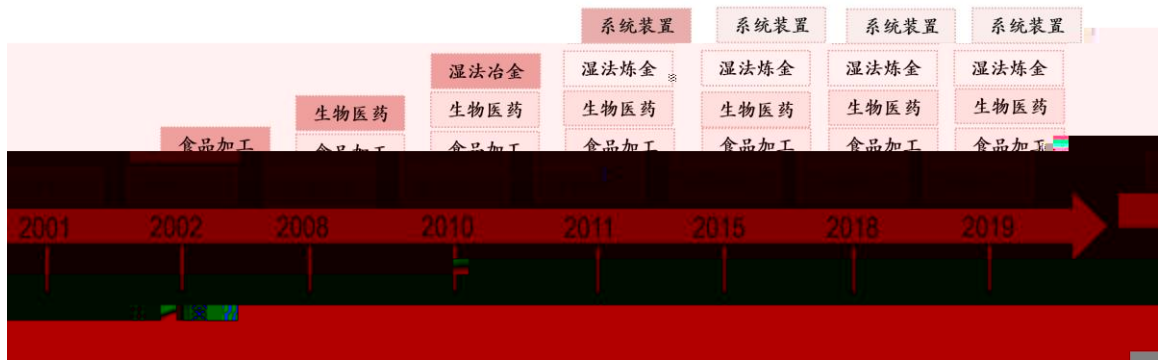


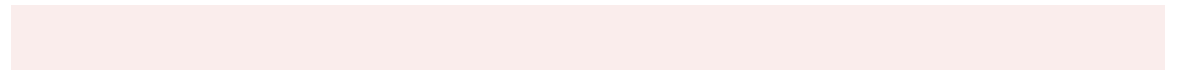
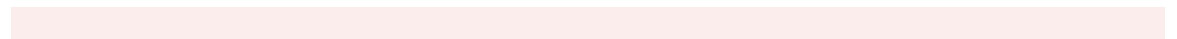
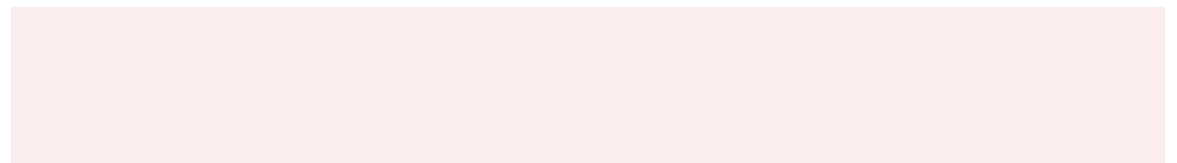
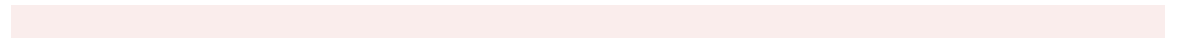
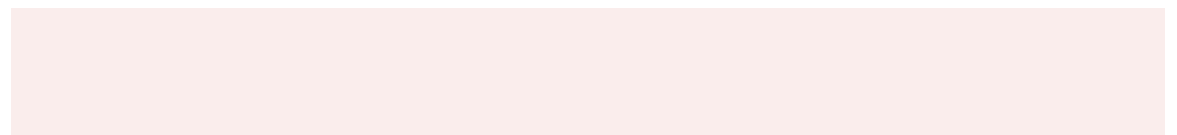
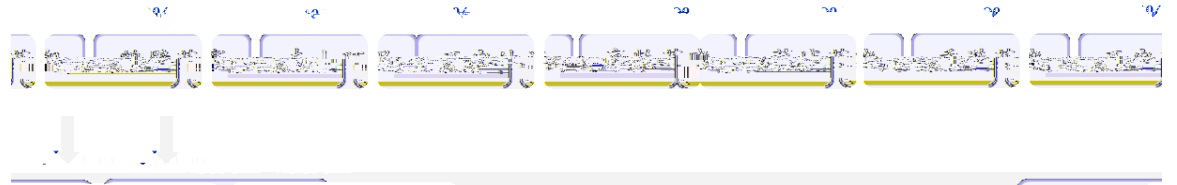
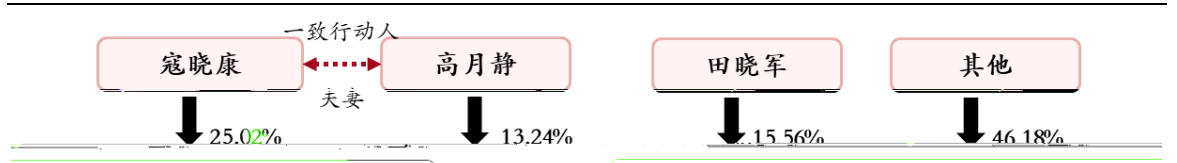
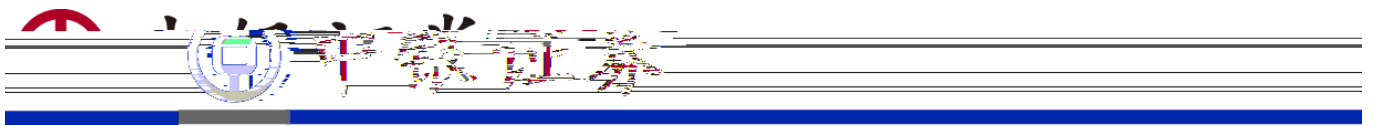






：



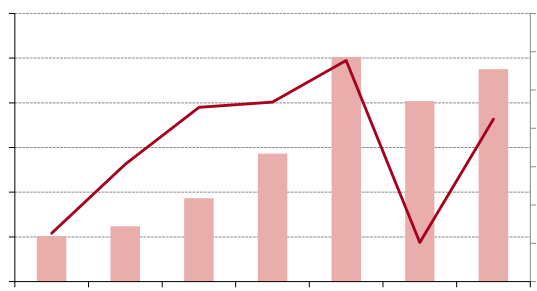
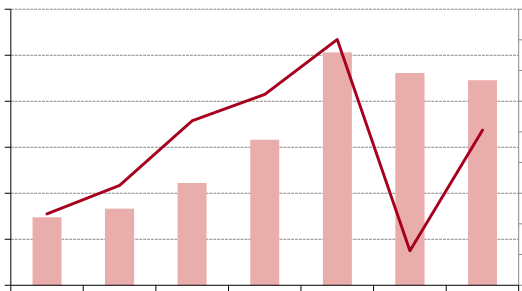




[Redacted text block]

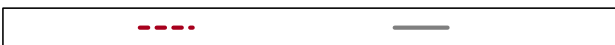
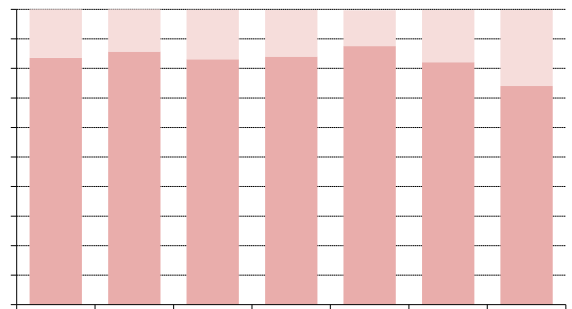
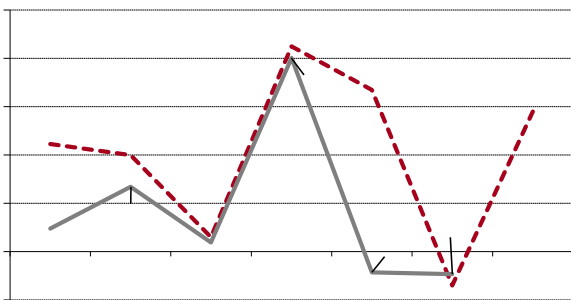
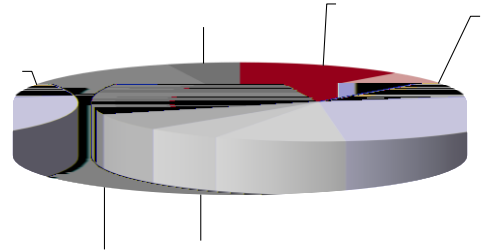
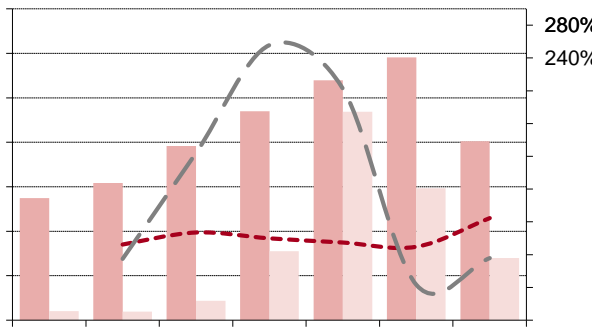
[Redacted text block]

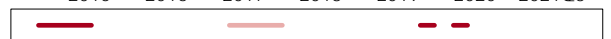
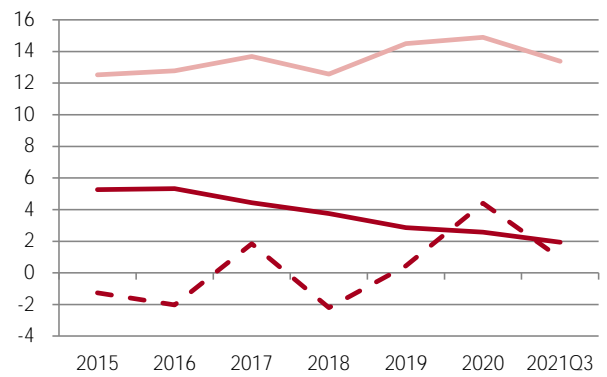
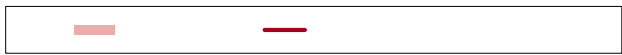
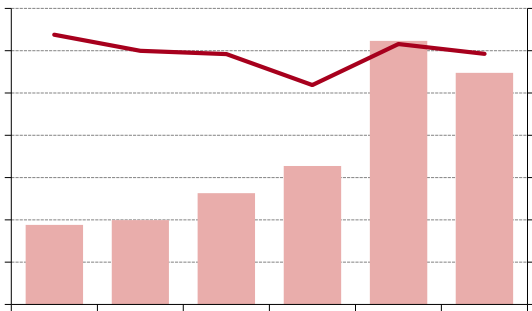
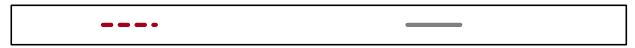
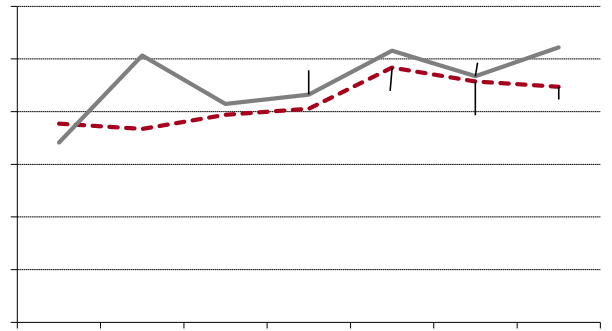
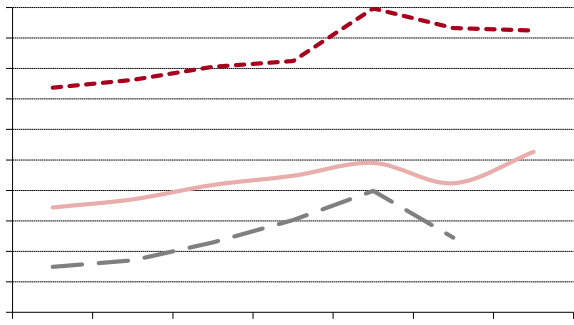
[Redacted text block]



[Caption box for the first chart]

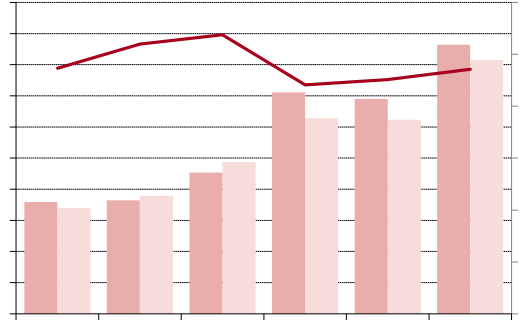
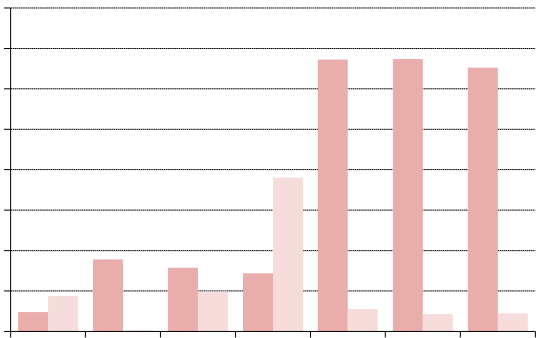
[Caption box for the second chart]





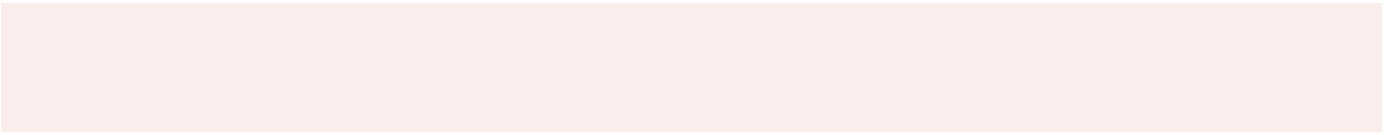
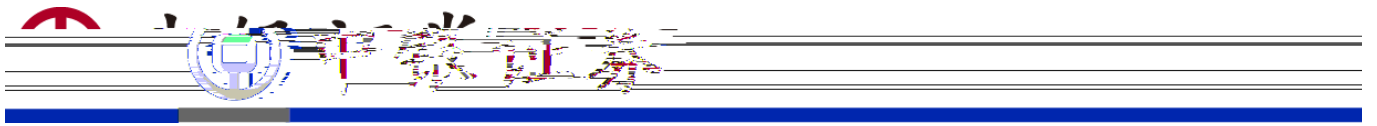
Three horizontal light pink bars.

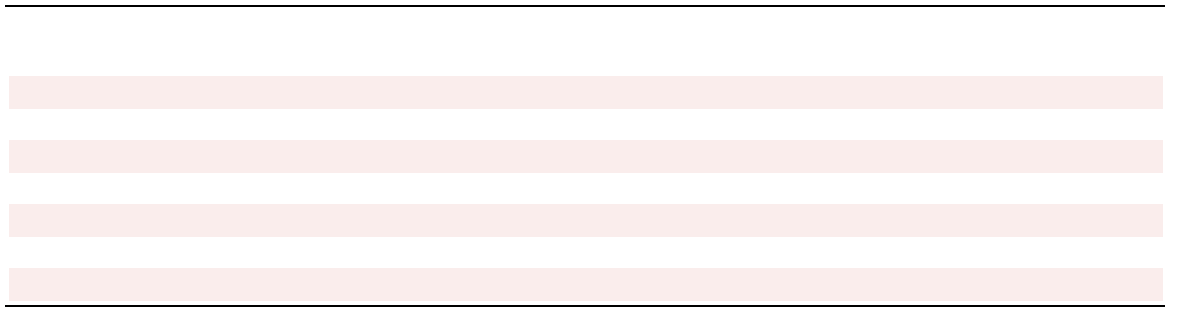
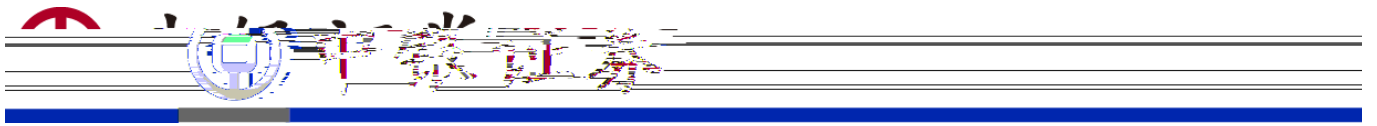
A wide horizontal light pink bar.



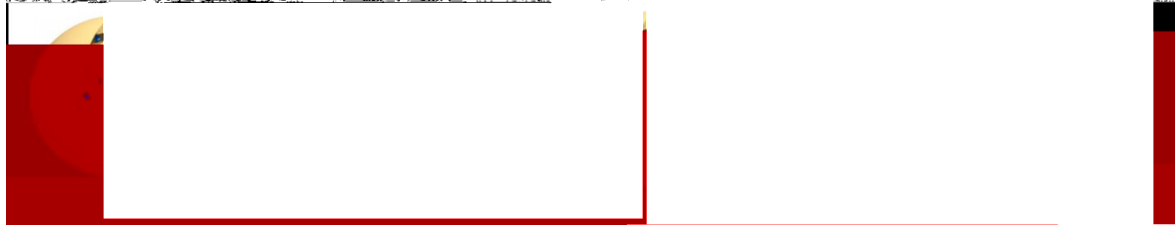
Legend for the first bar chart, showing two colored squares.

Legend for the second bar chart, showing two colored squares and a red line.





离子交换树脂：应用领域例如硬水软化 吸附树脂：应用领域例如污水处理 生物医药等

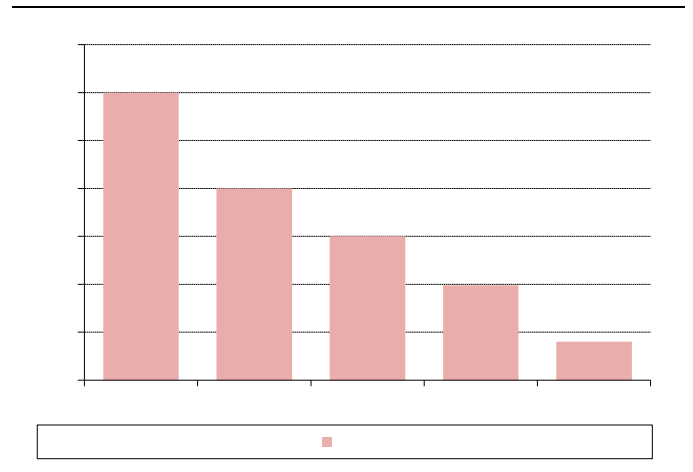
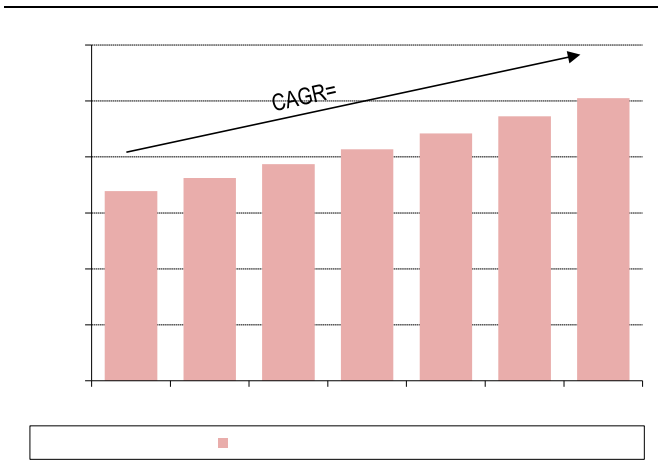
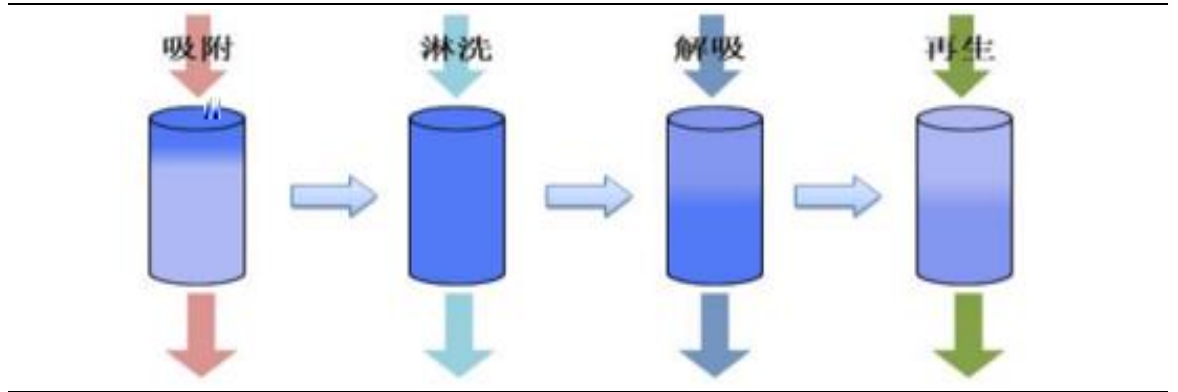
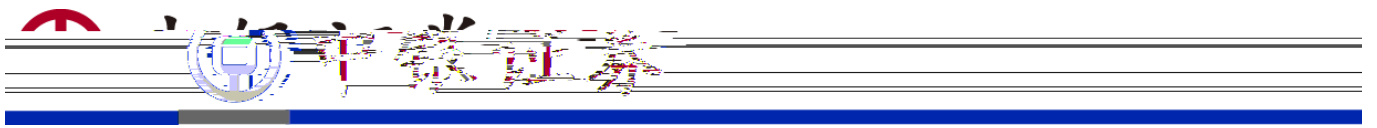


主要应用于医药领域

螯合树脂：应用领域例如湿法冶金等

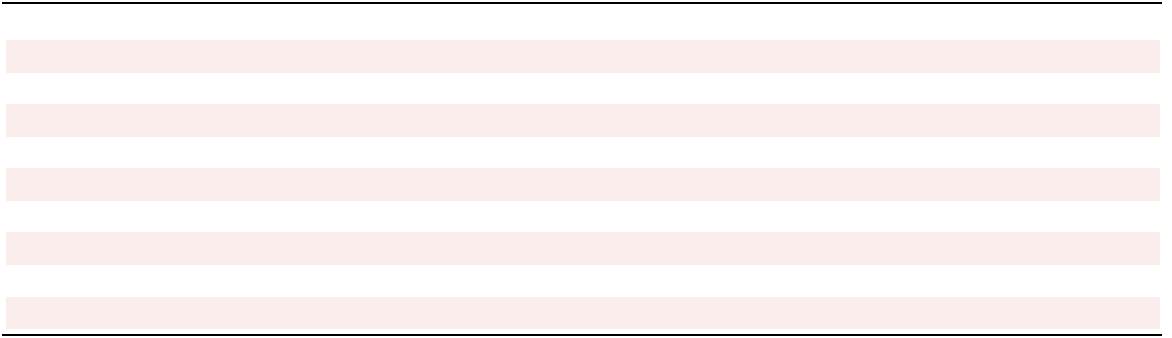
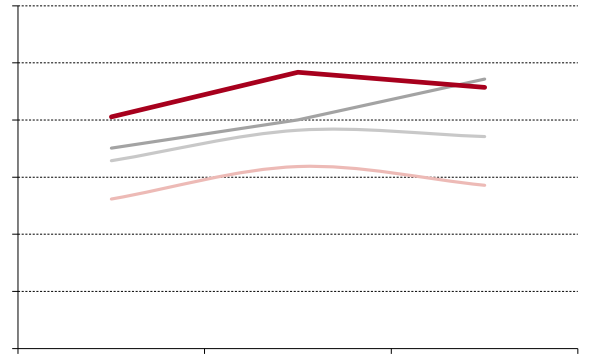
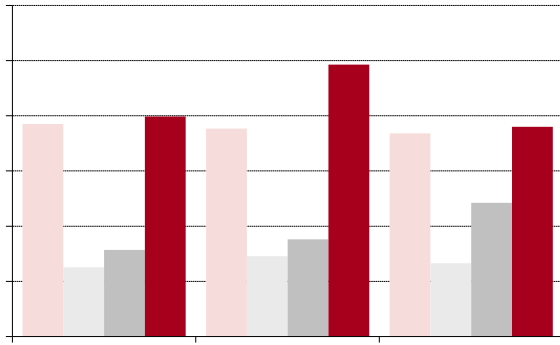
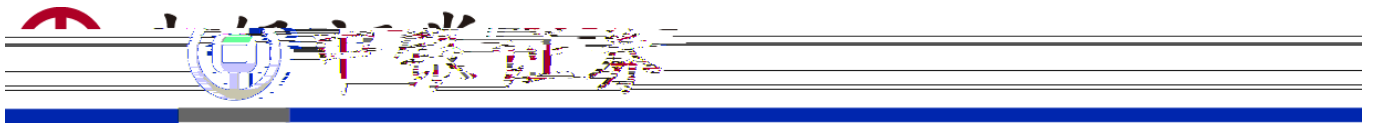
酶载体树脂：

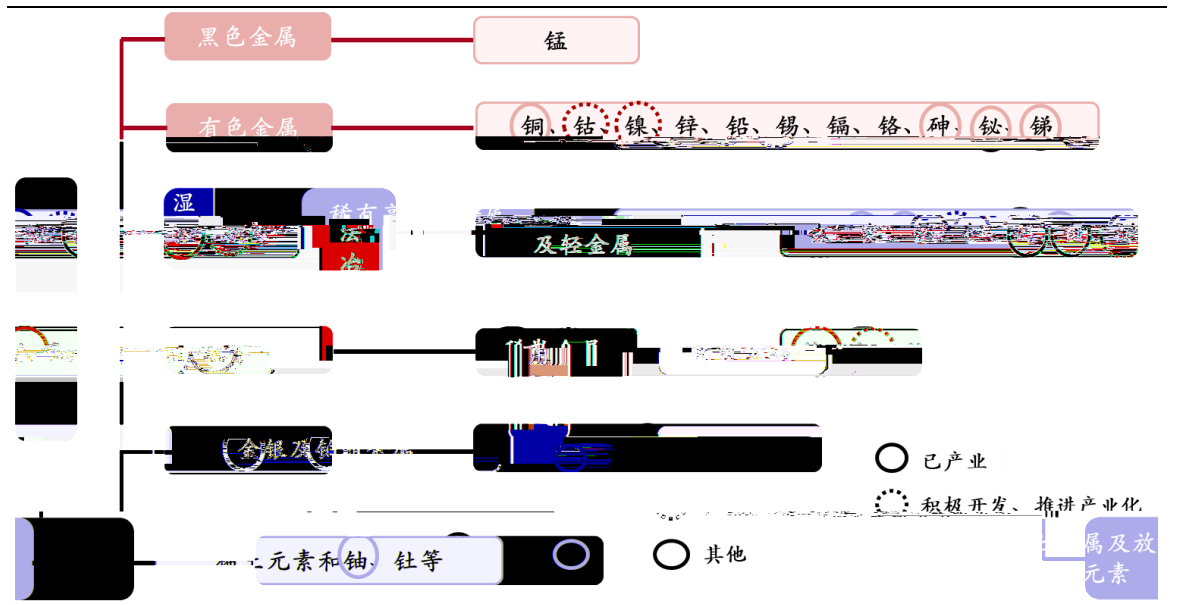
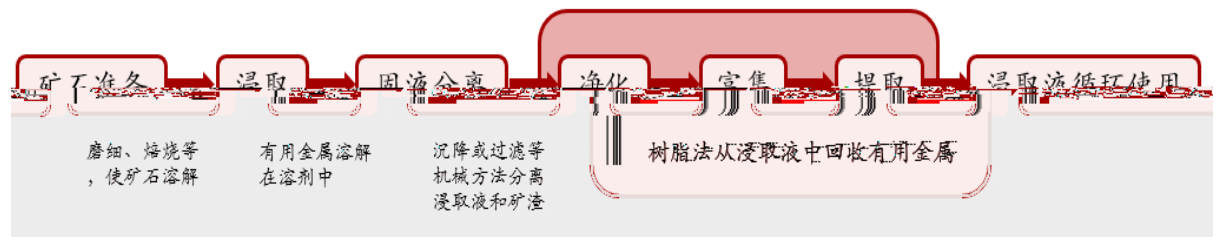
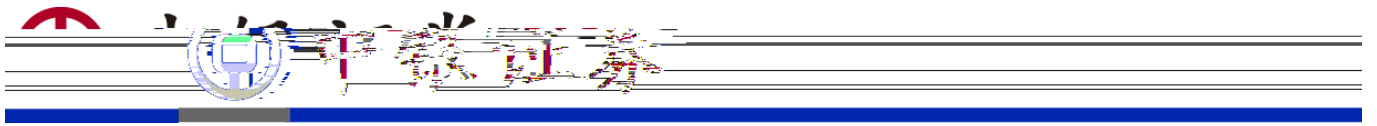


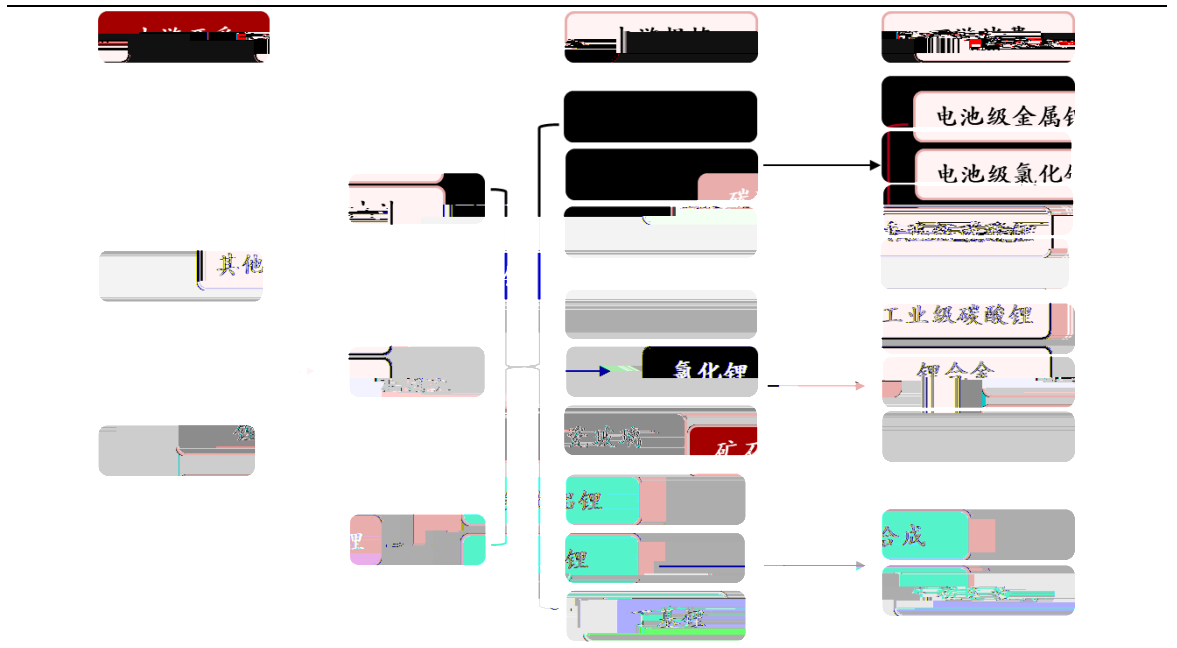
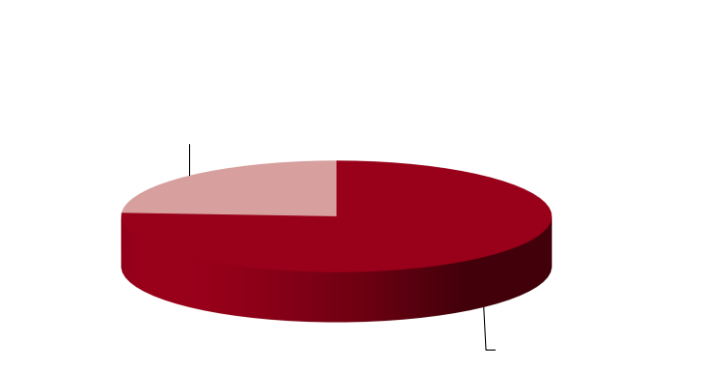
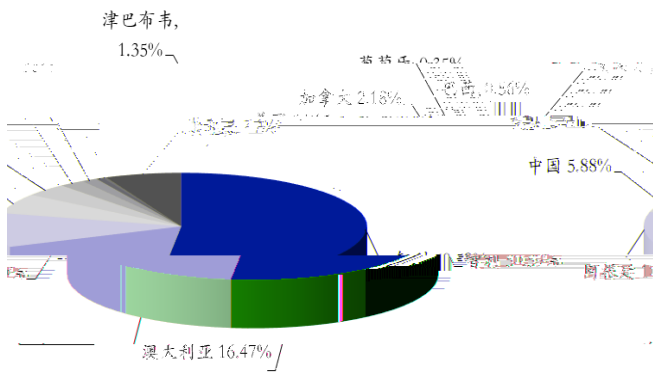
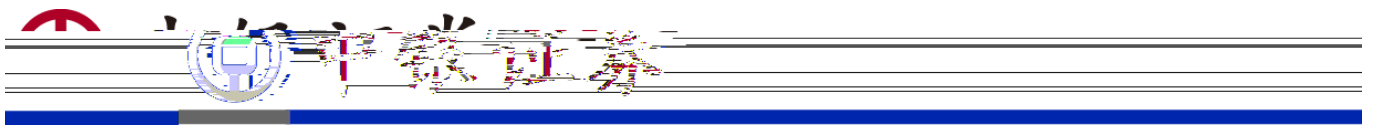


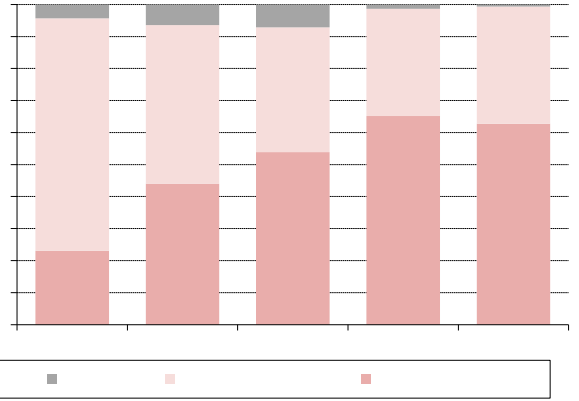
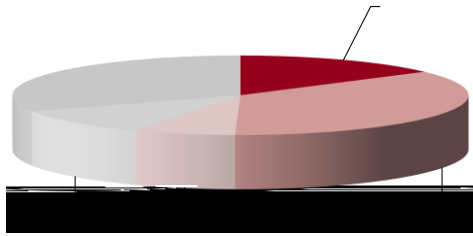




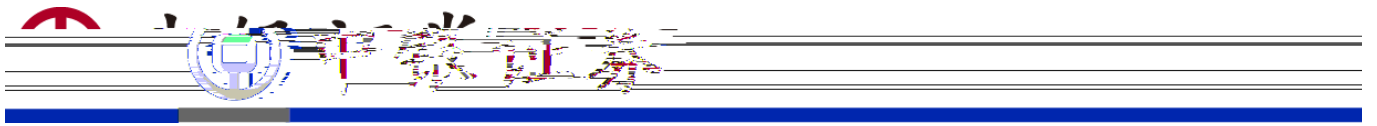


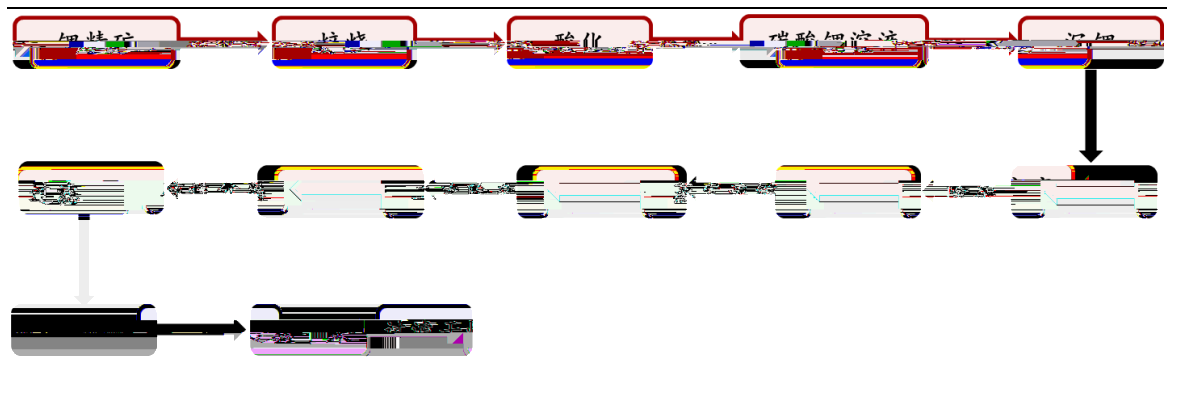
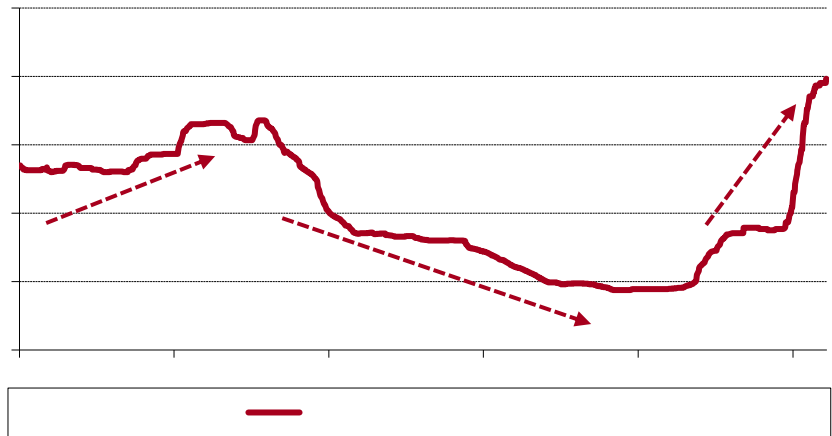


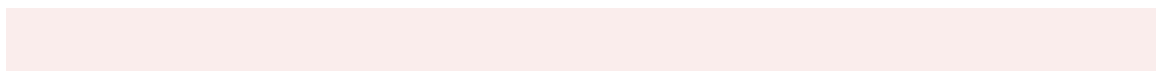
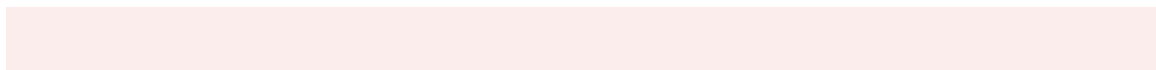
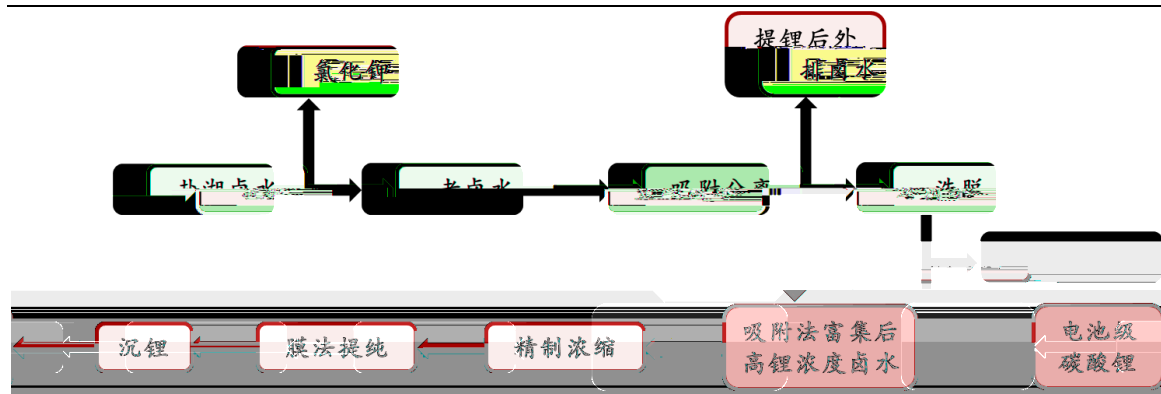
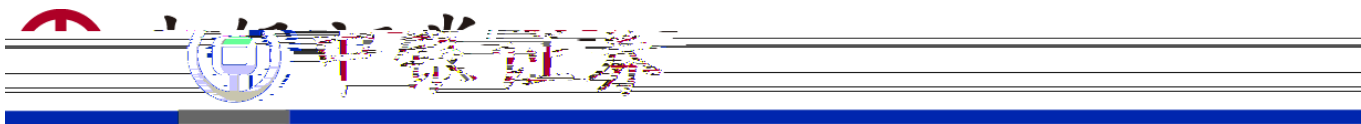


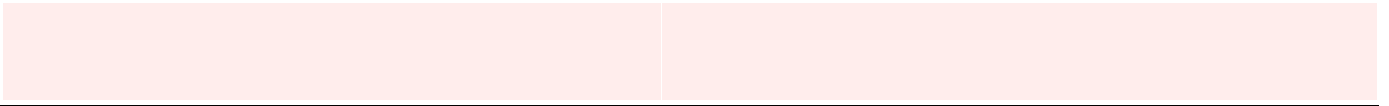
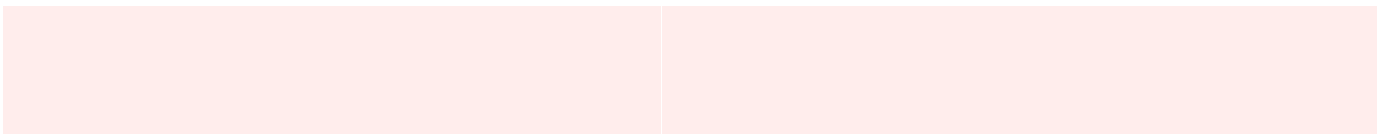
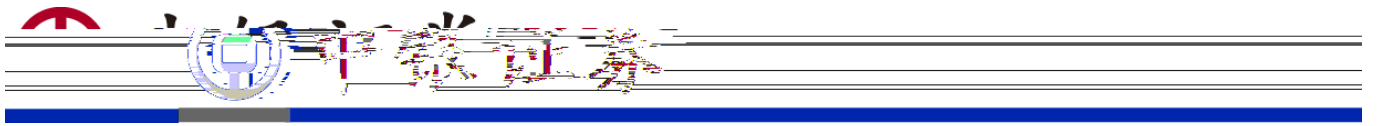


Placeholder area consisting of ten horizontal light red bars.

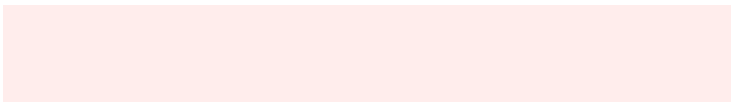
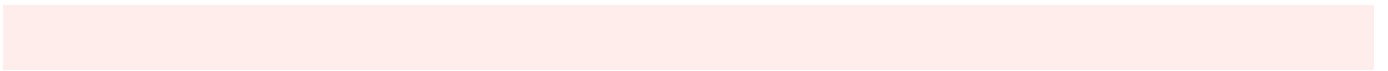
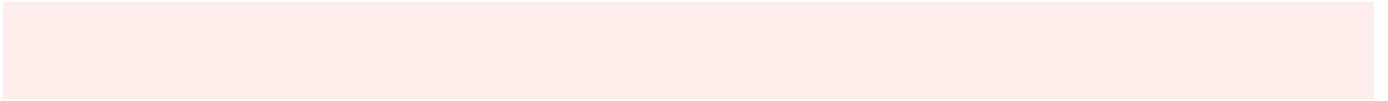
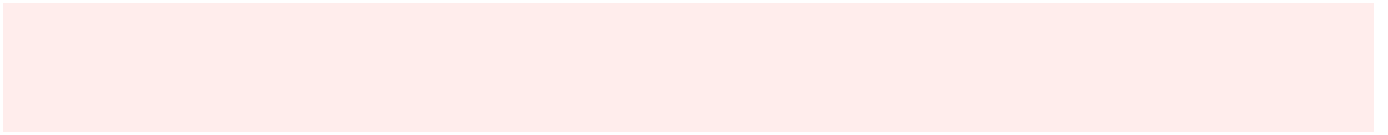
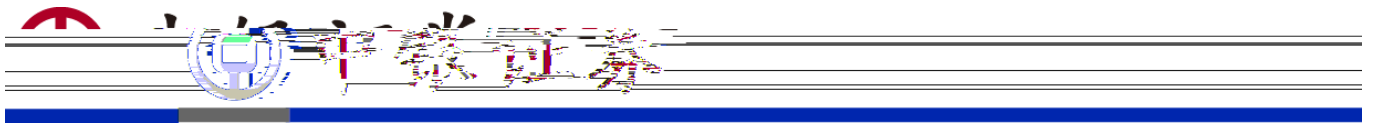


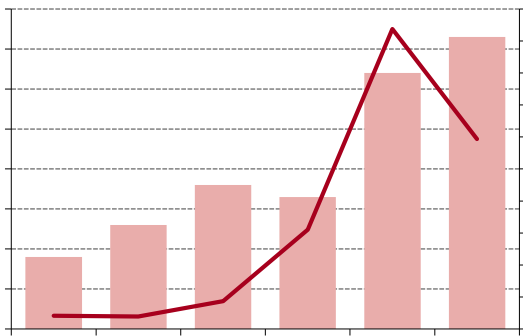




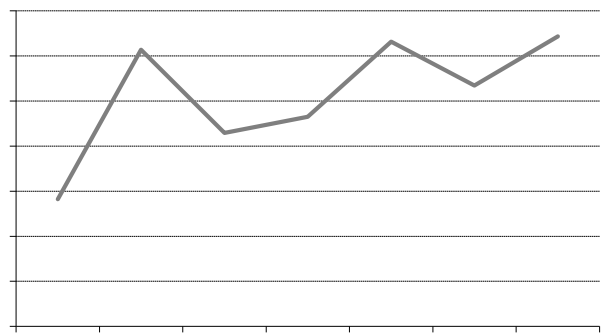




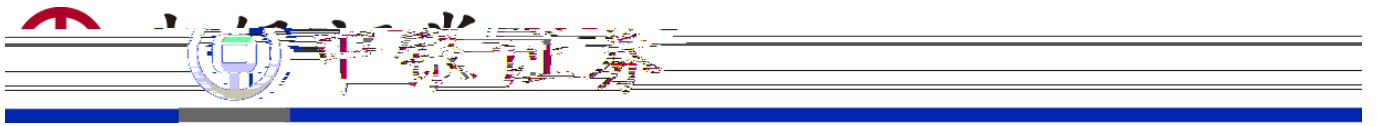


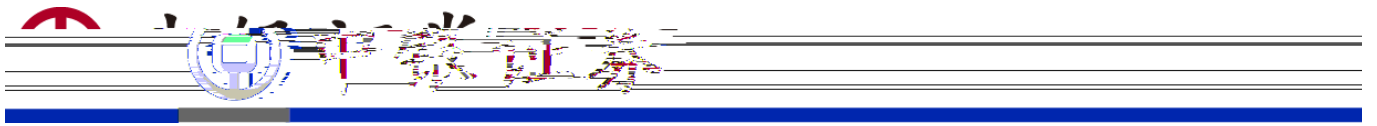


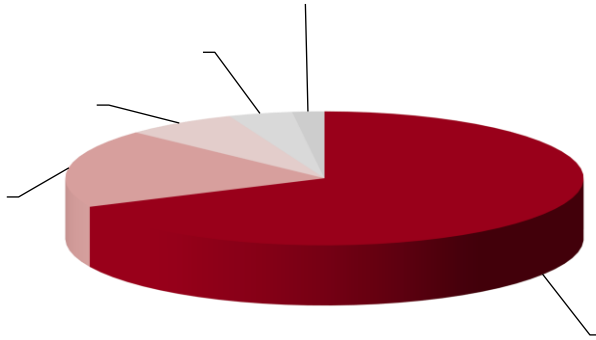
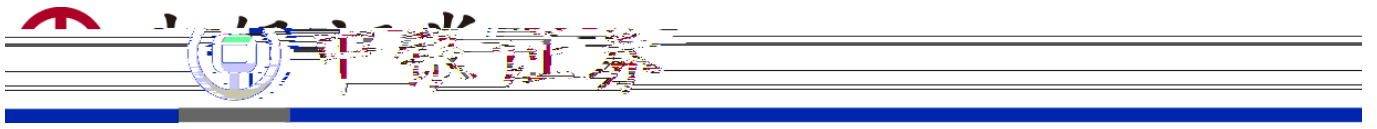
Legend for the bar and line chart, showing a red bar and a red line.

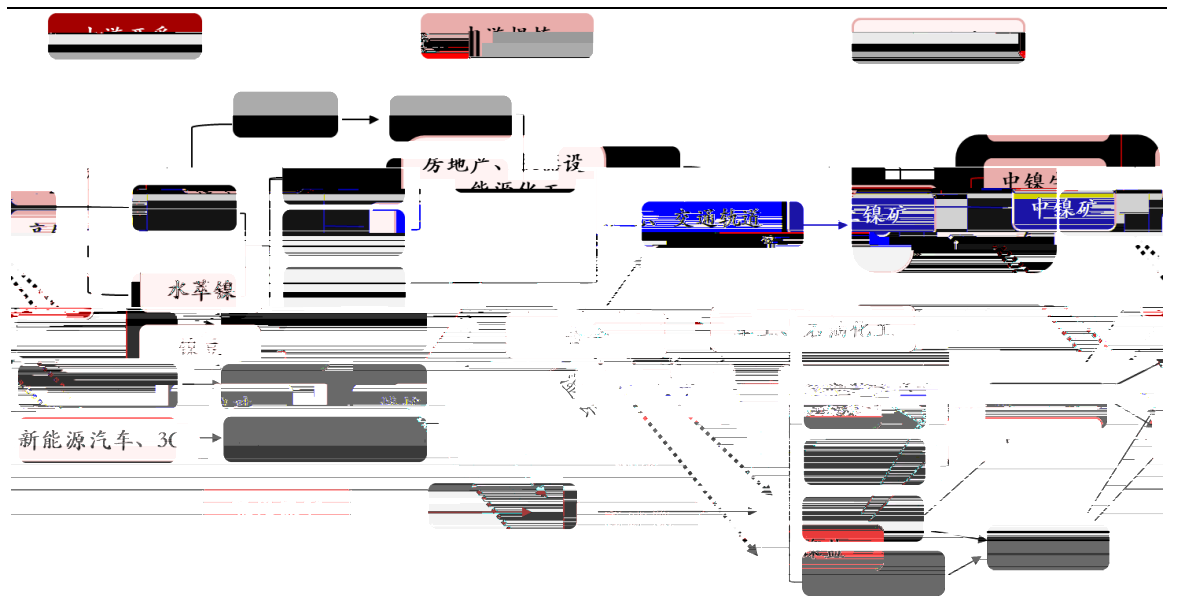
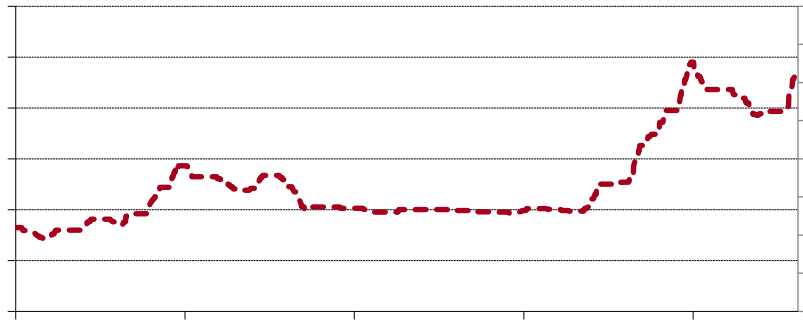
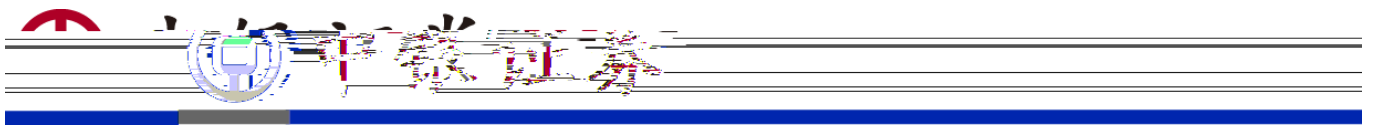


Legend for the line chart, showing a grey line.

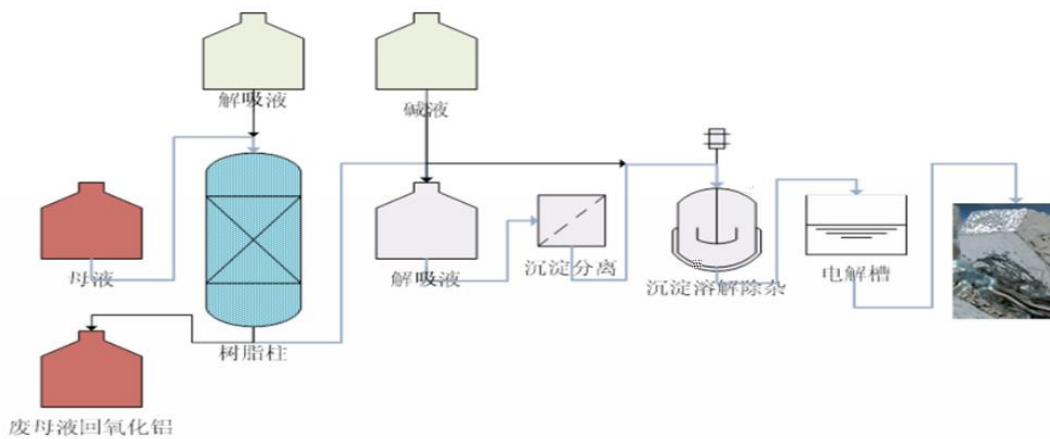
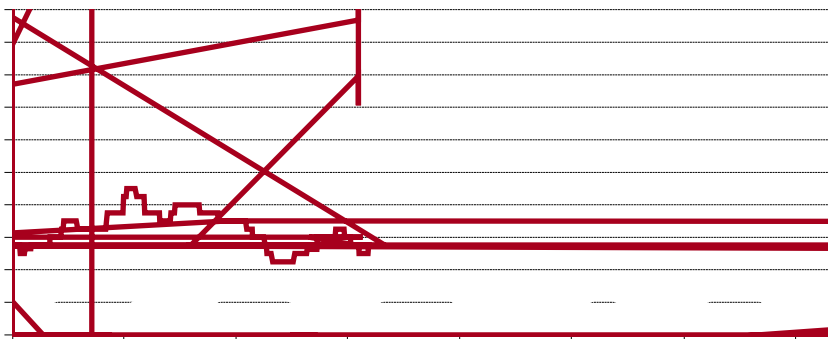
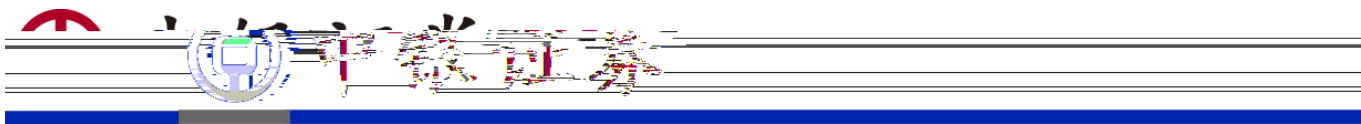




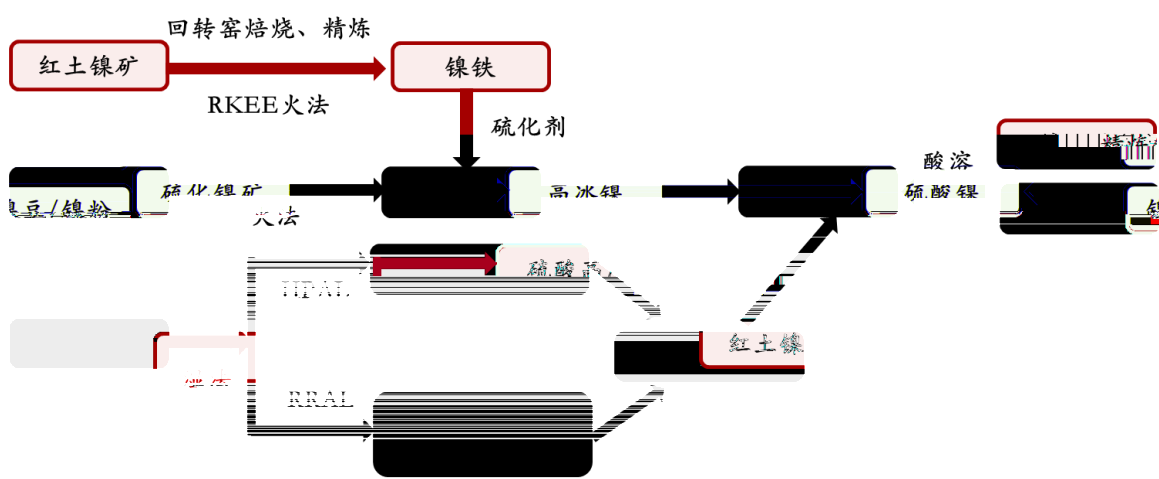
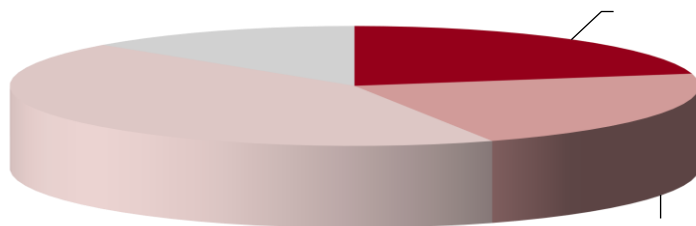
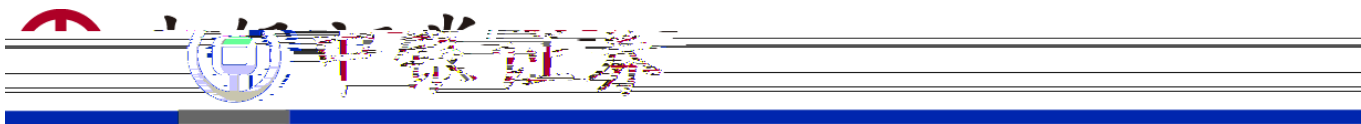


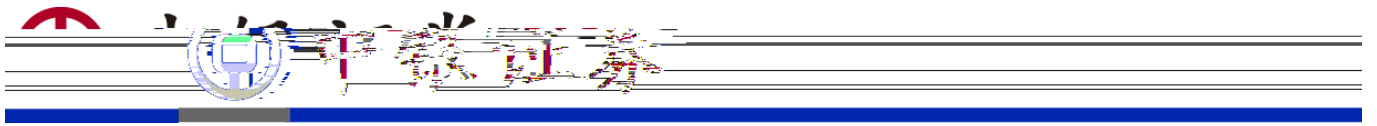












---

Blank white space.

Light pink horizontal bar.

Blank white space.

Light pink horizontal bar.

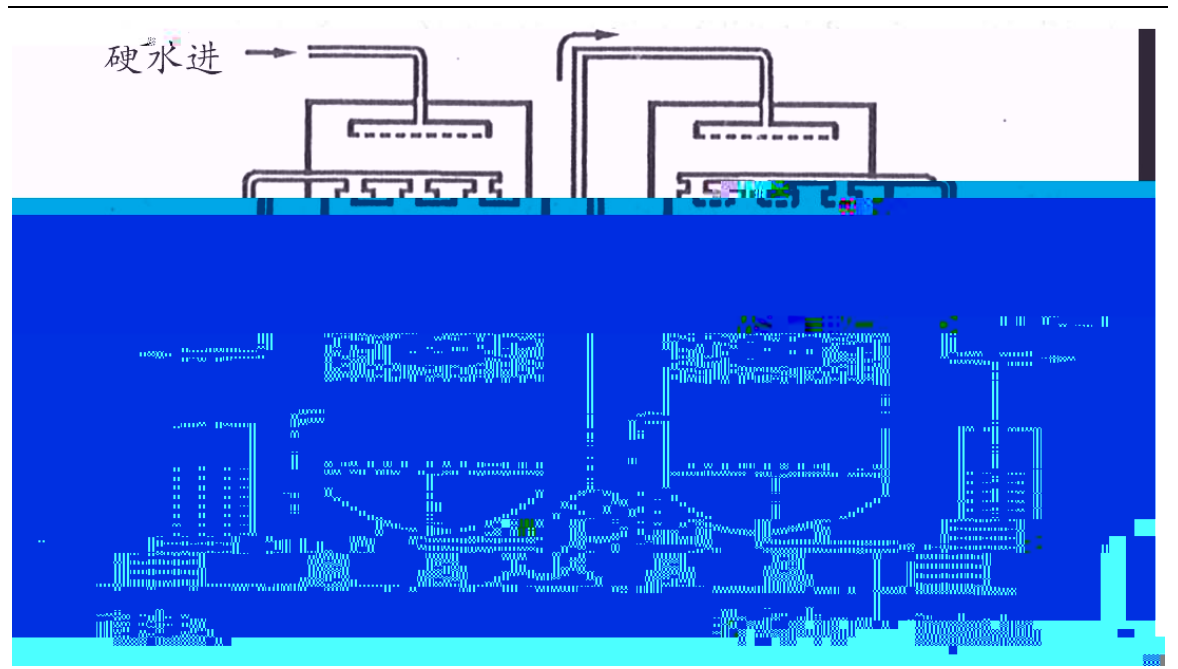
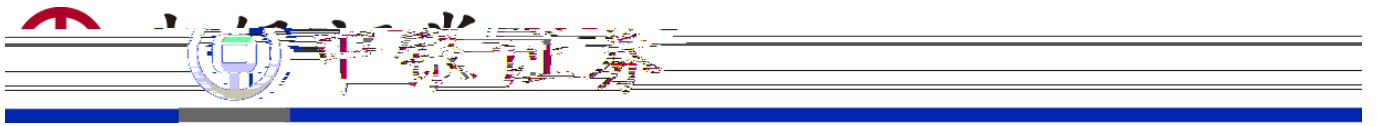
Light pink horizontal bar.

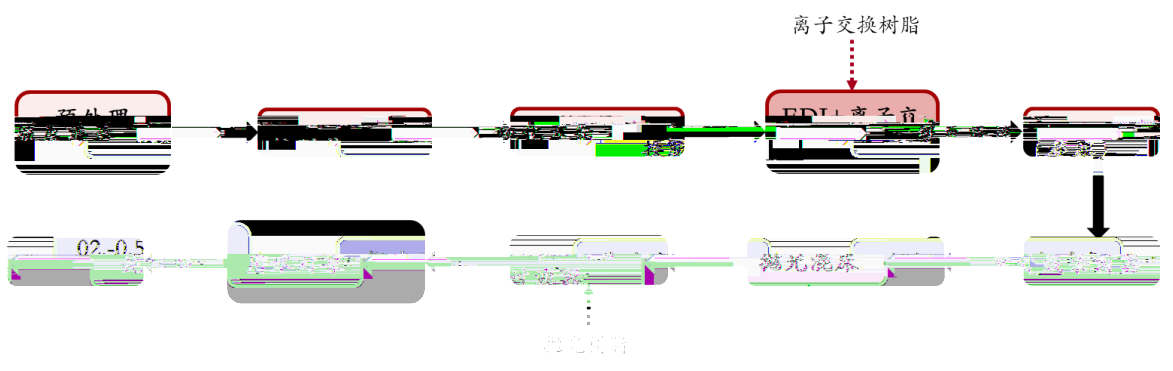
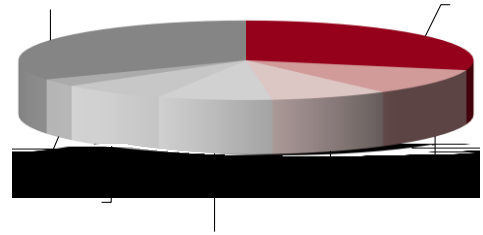
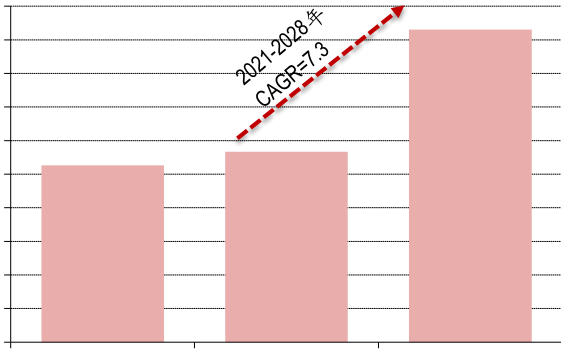
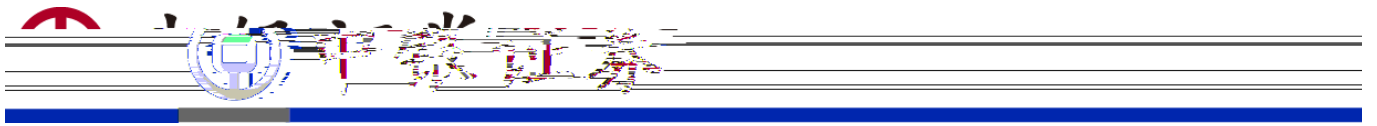
Light pink horizontal bar.

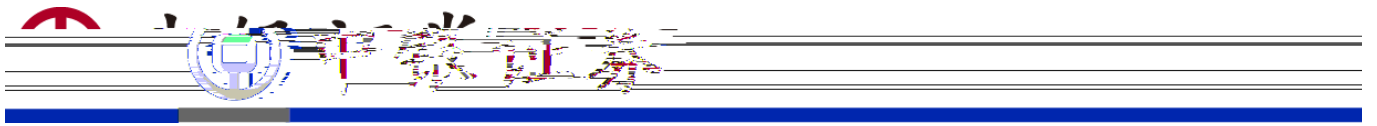
---

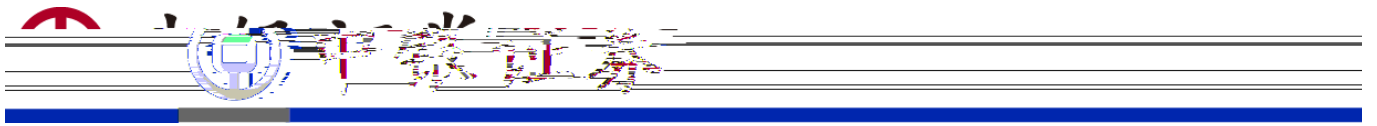
Blank white space.

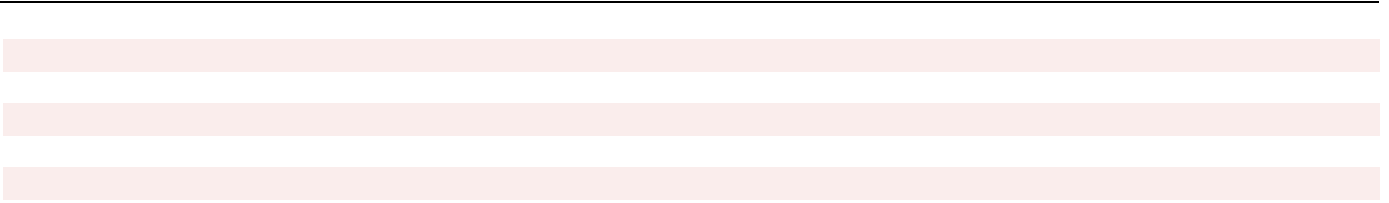
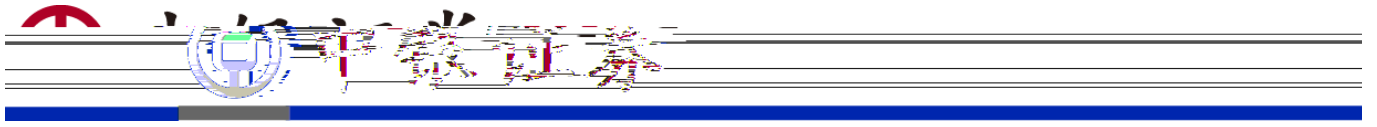
Large light pink rectangular block.

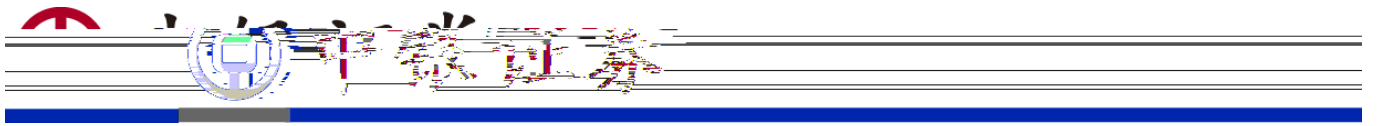












---

---

---

---

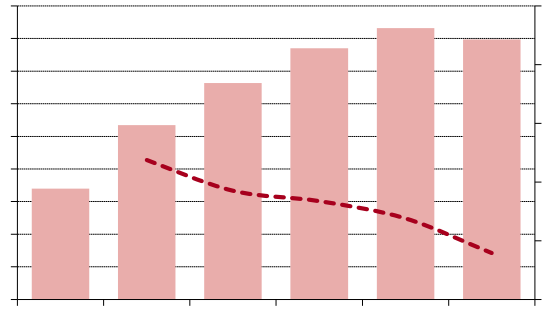
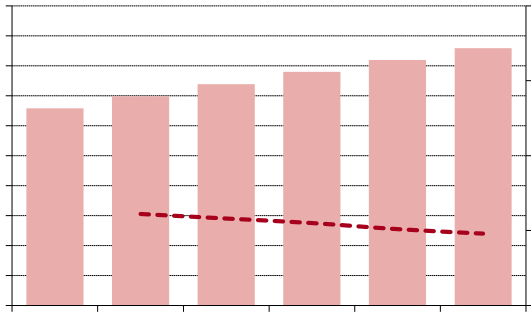
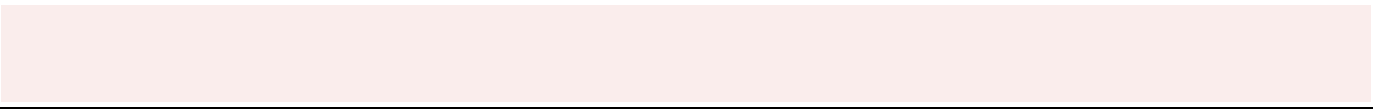
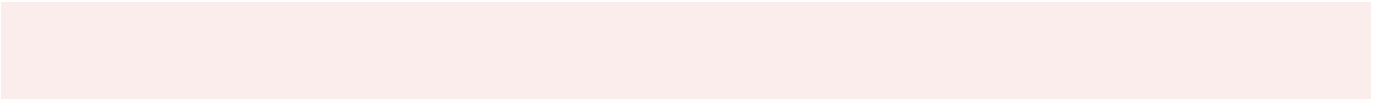
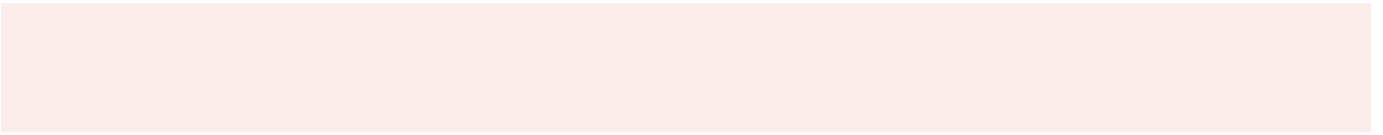
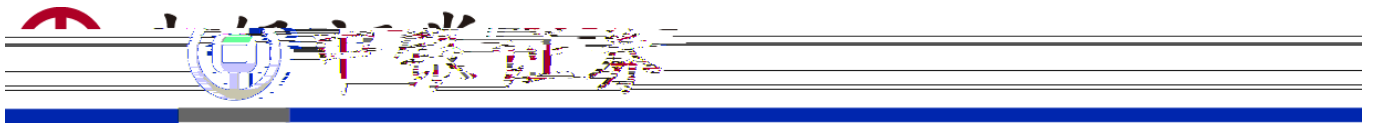
---

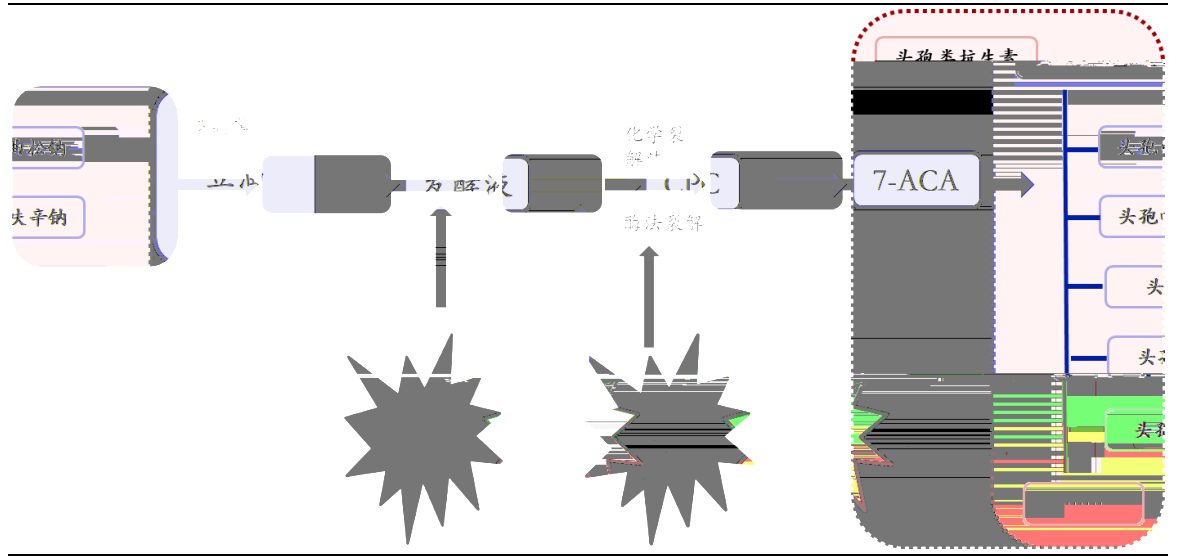
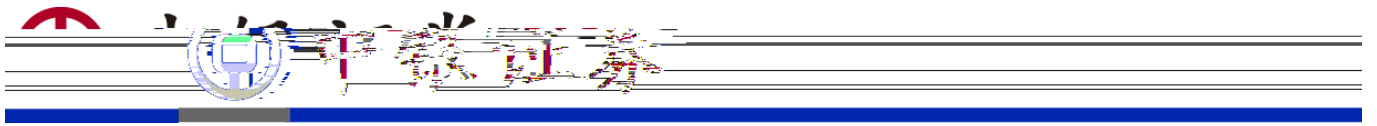
---

---

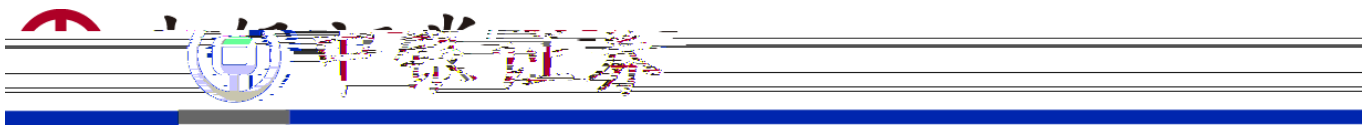
---

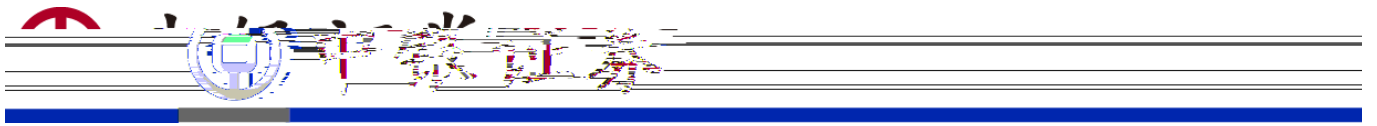






CBD





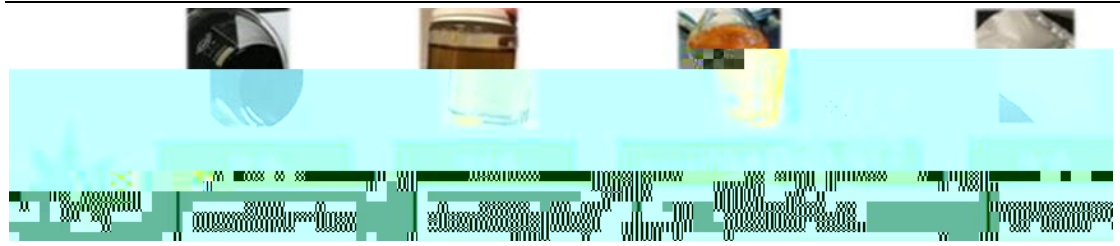
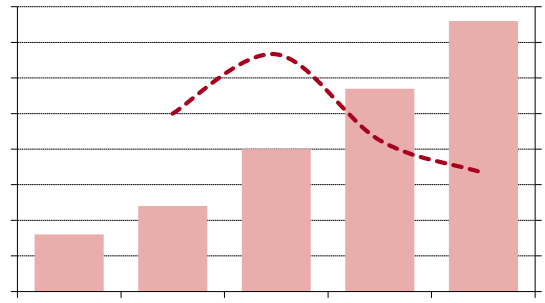
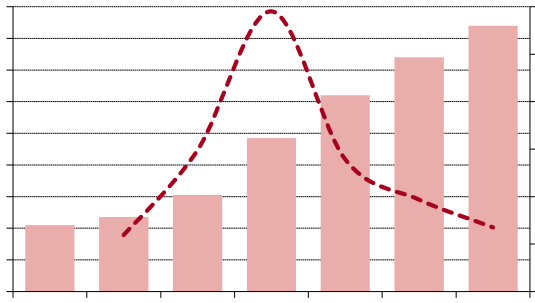
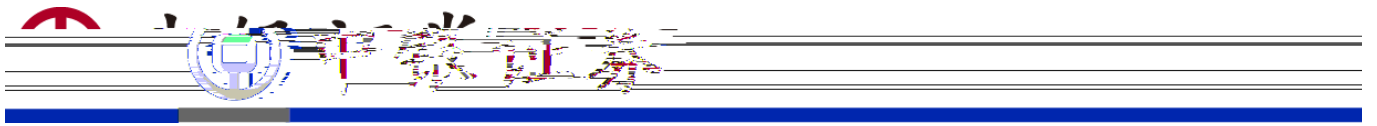
---

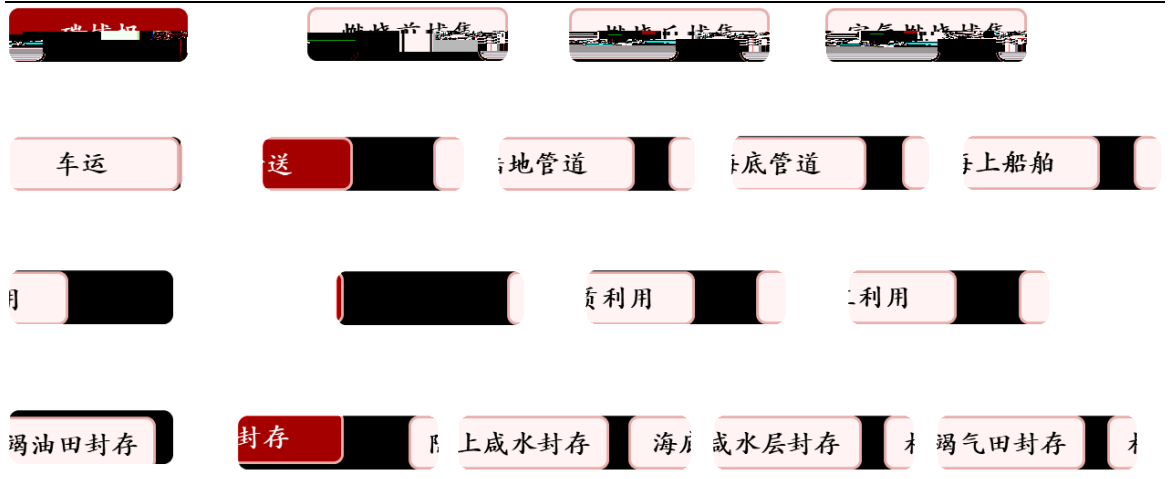
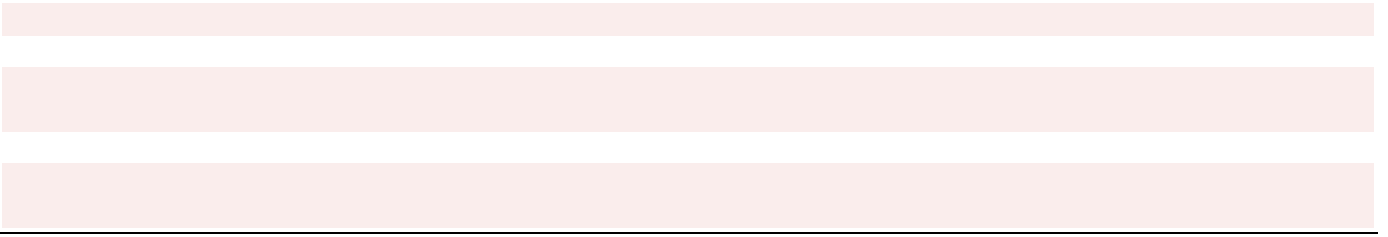
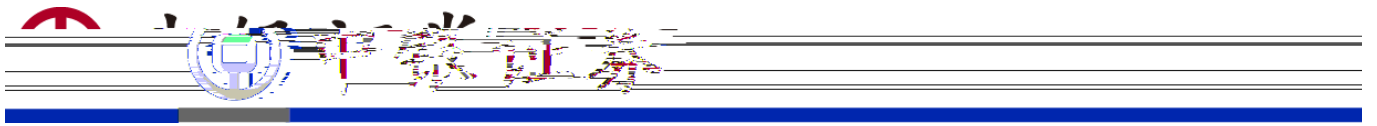
\_\_\_\_\_

\_\_\_\_\_

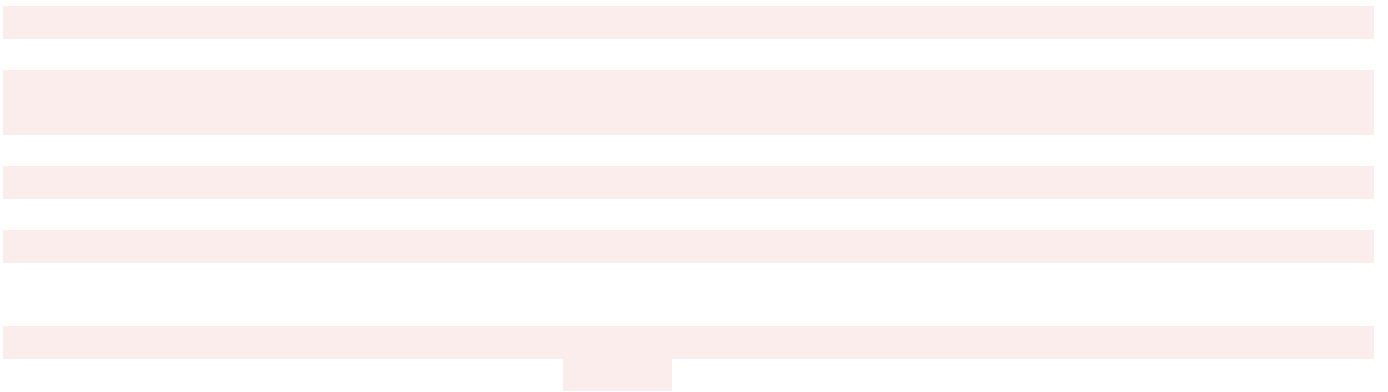
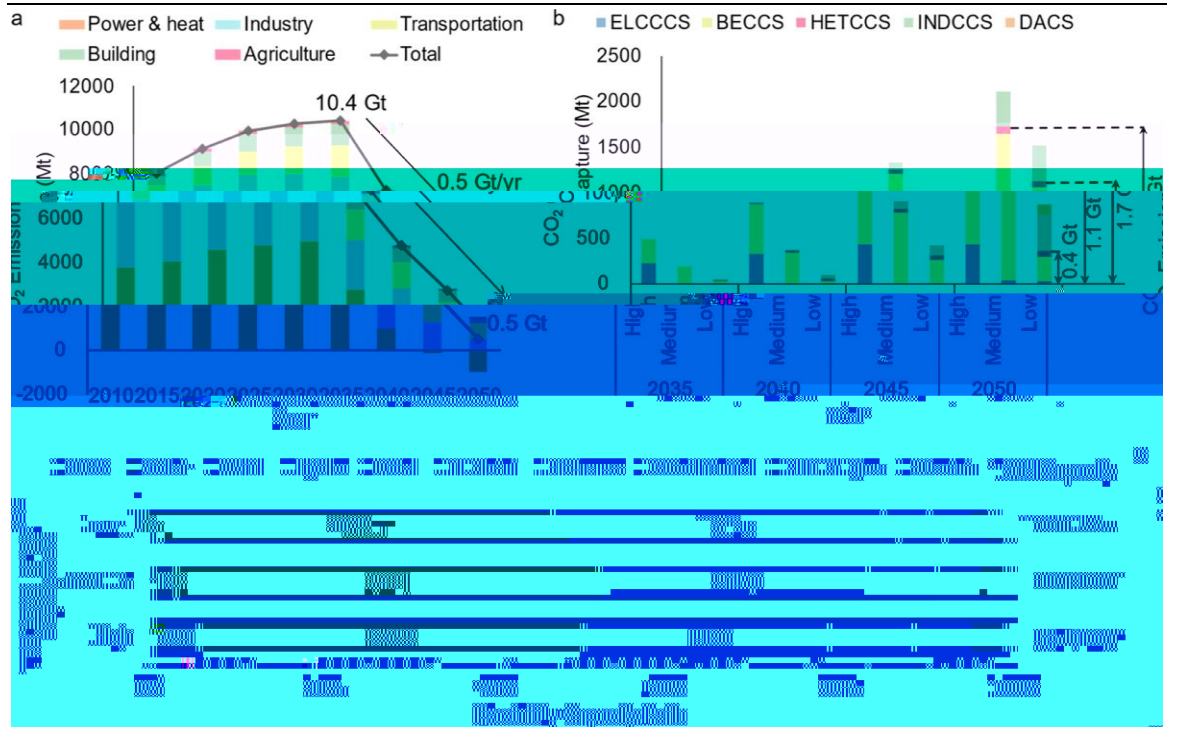
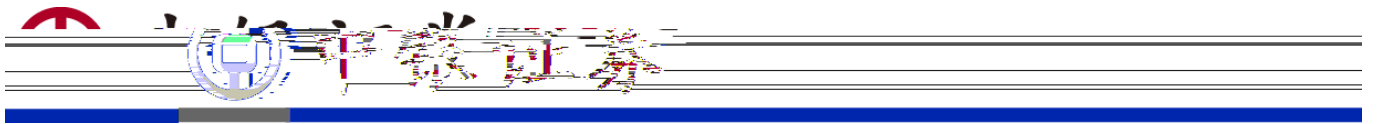
\_\_\_\_\_

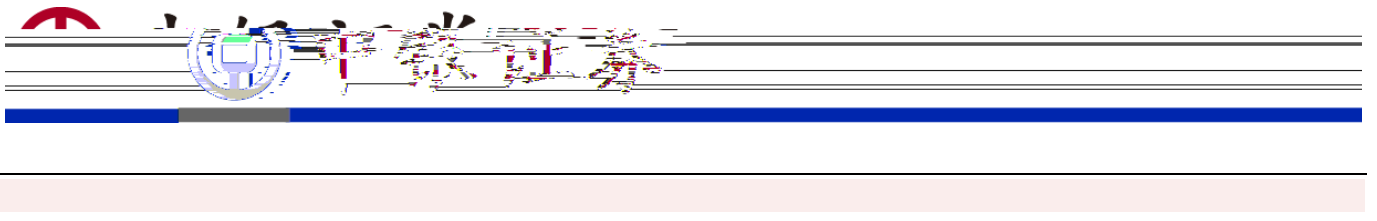
---



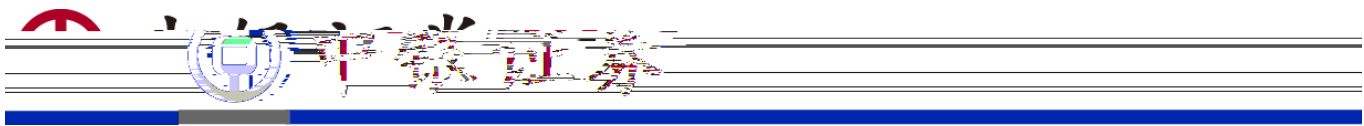


CCUS





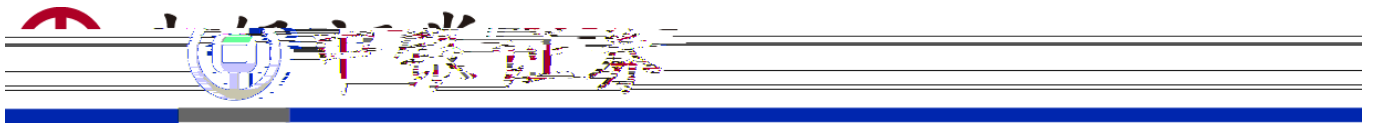




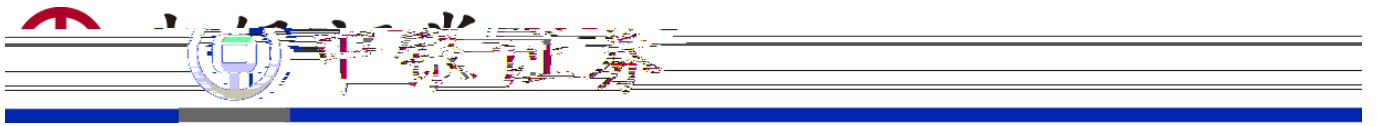
---

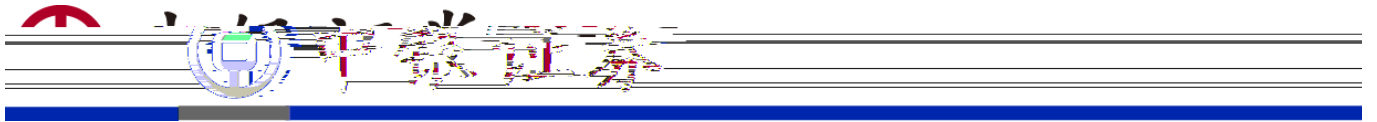
A series of horizontal lines for writing, consisting of 14 light pink lines between two black bounding lines.

---



Four horizontal, light pink rectangular bars stacked vertically, serving as a form or placeholder for text.





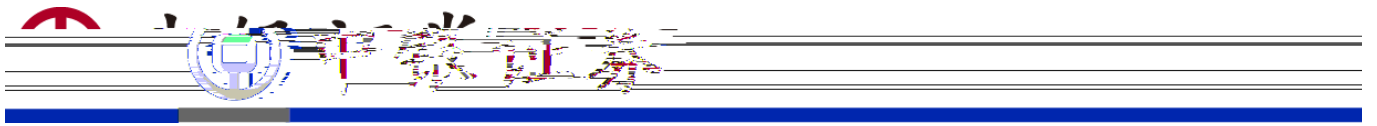
---

( )

---

( )

---



---

---

---

